

Week 6: Integration, Review & Submission

The culmination of your academic journey requires meticulous attention to integration, evidence compilation, and rigorous quality assurance. This final week transforms individual components into a cohesive, submission-ready document that demonstrates comprehensive understanding and professional presentation standards.



Document Integration Strategy

01

Consolidate Core Tasks

Merge Tasks 1-4 into a single, flowing narrative that maintains logical progression while eliminating redundancy and ensuring seamless transitions between sections.

02

Achieve Target Length

Reach approximately 2,000 words total through strategic expansion of key points, enhanced analysis, and comprehensive coverage of all required elements.

03

Maintain Coherence

Ensure consistent argumentation, unified voice, and clear connections between different sections to create a professional, polished final product.

Essential Structural Components

Introduction Requirements

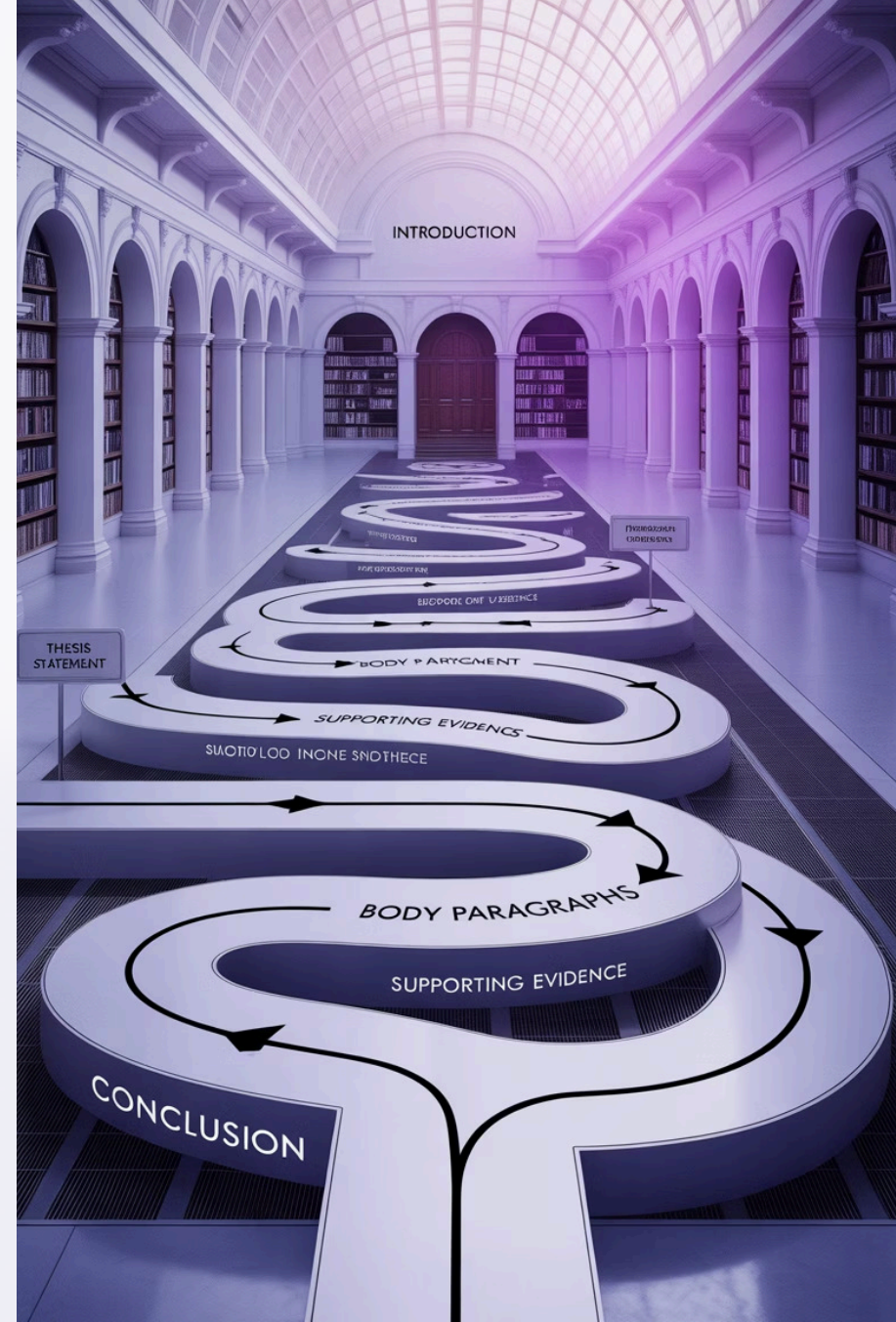
- Define document scope and boundaries
- Outline organizational structure
- Establish clear purpose statement
- Preview main arguments and findings

The introduction serves as your academic roadmap, providing assessors with clear expectations and demonstrating your understanding of assignment parameters.

Conclusion Essentials

- Synthesize key insights discovered
- Present actionable recommendations
- Address limitations and future research
- Reinforce main thesis arguments

Your conclusion must demonstrate critical thinking by connecting findings to broader implications and providing concrete next steps.



Visual Evidence Integration



Charts & Graphs

Incorporate data visualizations that directly support your arguments. Ensure all charts include proper titles, axis labels, and source citations to maintain academic credibility.



Strategic Frameworks

Utilize SWOT analysis, PESTLE frameworks, and risk matrices to demonstrate systematic analytical thinking and comprehensive situational assessment.



Supporting Appendices

Build comprehensive appendices containing supplementary materials, detailed calculations, extended data sets, and additional supporting documentation.



SWOT Analysis Framework

Strengths

Internal positive attributes and competitive advantages that support organizational objectives and strategic positioning in the marketplace.

Weaknesses

Internal limitations and deficiencies that may hinder performance or competitive positioning, requiring strategic attention and improvement.

Opportunities

External factors and trends that could be leveraged for strategic advantage, growth, or improved market positioning.

Threats

External challenges and risks that could negatively impact organizational performance or strategic objectives.

PESTLE Environmental Analysis

Political

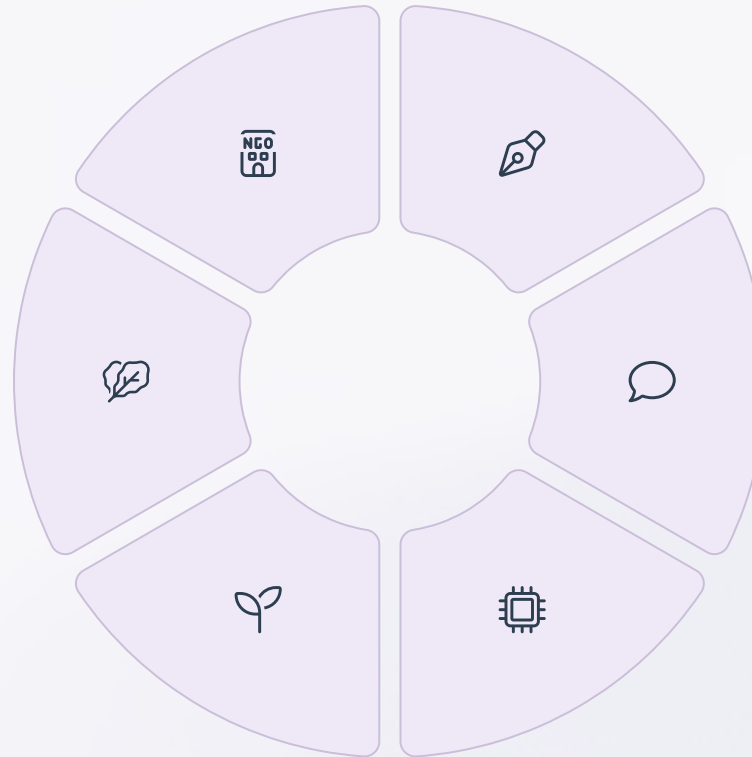
Government policies, regulations, political stability, and legislative changes affecting business operations and strategic decisions.

Environmental

Sustainability concerns, environmental regulations, climate change impacts, and ecological considerations for business strategy.

Legal

Legal requirements, compliance obligations, industry regulations, and juridical changes affecting business operations.



Economic

Economic indicators, market conditions, inflation rates, and financial factors influencing organizational performance and strategy.

Social

Cultural trends, demographic shifts, consumer behavior patterns, and societal values impacting business operations.

Technological

Technological advances, automation trends, digital transformation, and innovation affecting competitive positioning.



Quality Assurance Checklist

1 Word Count Verification

Ensure final document meets the +/-10% word count requirement. This demonstrates adherence to academic standards and effective concise communication skills.

2 Critical Tone Assessment

Review language for analytical objectivity, evidence-based argumentation, and constructive critique that demonstrates academic rigor and professional judgment.

3 Grammar and Clarity Review

Conduct comprehensive proofreading for grammatical accuracy, sentence structure, and overall readability to ensure professional presentation standards.

Harvard Referencing Standards

In-Text Citation Requirements

- Author-date format: (Smith, 2023)
- Page numbers for direct quotes: (Smith, 2023, p.45)
- Multiple authors: (Smith & Jones, 2023)
- Consistent formatting throughout document

Reference List Essentials

- Alphabetical ordering by author surname
- Complete bibliographic information
- Consistent formatting and punctuation
- Verification of all sources cited in-text



Critical Check: Cross-reference every in-text citation with the reference list to ensure complete accuracy and academic integrity compliance.

Qualifi Assessment Criteria

20%

Content Quality

Depth of analysis, relevance of information, and comprehensive coverage of assignment requirements

20%

Theory Application

Effective integration of academic theories, models, and frameworks to support arguments and analysis

20%

Knowledge Demonstration

Evidence of understanding core concepts and ability to synthesize complex information effectively

20%

Presentation Standards

Professional formatting, clear structure, logical flow, and adherence to academic writing conventions

20%

Referencing Accuracy

Correct citation format, complete reference list, and proper attribution of all sources used



Final Submission Excellence



Pre-Submission Review

Conduct a comprehensive final review against all Qualifi criteria. Verify that your integrated document demonstrates critical analysis, theoretical application, and professional presentation standards that reflect academic excellence.



Confident Submission

Submit your polished, cohesive document with confidence, knowing it represents the synthesis of rigorous academic work, strategic thinking, and professional presentation that meets the highest educational standards.

Your Week 6 submission represents the culmination of sustained academic effort. By following these integration and quality assurance protocols, you ensure your final document demonstrates the analytical rigor, theoretical understanding, and professional competency expected at this level of academic achievement.