



# Writing & Presenting Research

Mastering the art of communicating research findings through structured reports, compelling visualizations, and academic excellence.



# The Foundation of Research Communication

Effective research communication transforms complex findings into actionable insights. Whether presenting to academic peers or industry stakeholders, the way we structure and present our research determines its impact and credibility.

This week focuses on three critical components: structured report writing, compelling data visualization, and maintaining rigorous academic standards throughout the research communication process.

# Research Report Structure

01

---

## Introduction

Sets the context, defines the problem, and establishes research objectives with clear rationale.

03

---

## Methodology

Details research design, data collection methods, and analytical approaches for reproducibility.

05

---

## Discussion

Interprets results, addresses limitations, and connects findings to existing literature.

02

---

## Literature Review

Synthesizes existing knowledge, identifies gaps, and positions your research within the broader field.

04

---

## Results

Presents findings objectively with supporting evidence, tables, and visualizations.

06

---

## Conclusion

Summarizes key findings, implications, and recommendations for future research.

# Building a Strong Introduction

The introduction serves as your research's first impression, establishing credibility and engaging your audience. It should clearly articulate the research problem, justify its significance, and outline your approach.

A compelling introduction moves from broad context to specific focus, creating a logical pathway that guides readers toward your research questions. This section sets expectations and provides the foundation for everything that follows.

## Context Setting

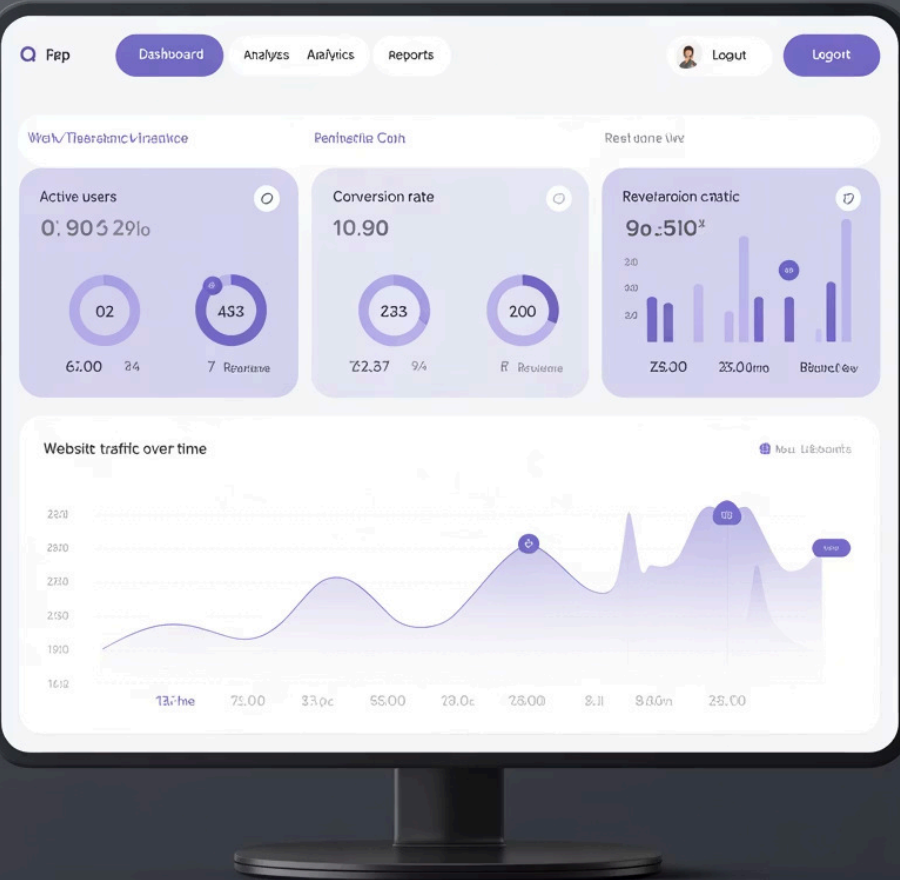
Establish the broader field and current understanding

## Problem Definition

Clearly articulate the specific research gap or challenge

## Research Objectives

State your aims and expected contributions



# Data Visualization Excellence

Effective data visualization transforms complex datasets into clear, compelling narratives that support your research conclusions.



## Graphs & Charts

Select appropriate chart types that best represent your data relationships. Bar charts for comparisons, line graphs for trends, scatter plots for correlations.



## Tables

Present precise numerical data in organized formats. Use clear headers, consistent formatting, and highlight key findings through strategic placement.



## Dashboards

Create comprehensive overviews that combine multiple data sources. Interactive elements can enhance engagement and understanding.

# Clear Communication of Findings

"The best visualizations are those that make complex data immediately understandable to your audience."

Successful data communication requires more than just creating charts. It demands thoughtful consideration of your audience, clear labeling, and strategic use of color and design elements to guide attention to key insights.

**1**

## **Audience Analysis**

Understand who will consume your visualizations and tailor complexity accordingly

**2**

## **Design Principles**

Apply consistent styling, appropriate color schemes, and clear hierarchies

**3**

## **Narrative Flow**

Sequence visualizations to tell a coherent story that supports your conclusions



# Academic Writing Standards

Academic writing demands precision, objectivity, and adherence to established conventions that ensure credibility and reproducibility.

## Critical Evaluation

Academic writing goes beyond description to provide thoughtful analysis. Evaluate sources critically, acknowledge limitations, and present balanced perspectives that demonstrate deep understanding of the subject matter.

- Analyze rather than simply describe
- Question assumptions and methodologies
- Acknowledge counterarguments
- Maintain objective tone throughout



# Referencing Systems: APA vs Harvard

## APA Style

Commonly used in psychology, education, and social sciences. Features author-date citations and detailed reference lists with specific formatting requirements.

**Example:** (Smith, 2023, p. 45)

## Harvard Style

Widely adopted across disciplines, particularly in business and humanities. Uses author-date system with flexible formatting variations.

**Example:** (Smith 2023, p. 45)

Both systems emphasize accuracy, consistency, and proper attribution of sources. Choose the style required by your institution or publication and apply it meticulously throughout your work.



# Best Practices for Research Presentation

1

## Preparation

Know your audience, practice your delivery, and prepare for potential questions. Create backup slides for detailed explanations.

2

## Structure

Follow a logical flow that mirrors your written report. Use clear transitions and signpost your progress throughout the presentation.

3

## Engagement

Use storytelling techniques, interactive elements, and compelling visuals to maintain audience attention and facilitate understanding.

4

## Delivery

Speak clearly, maintain eye contact, and use confident body language. Allow time for questions and discussion.



# Key Takeaways

Effective research communication combines structured writing, compelling visualization, and rigorous academic standards to create impactful presentations that advance knowledge and influence decision-making.



## Structure Matters

Follow established report formats to ensure clarity and professional presentation of your research findings.



## Visualize Effectively

Transform complex data into clear, compelling visuals that support and enhance your research narrative.



## Maintain Standards

Uphold academic integrity through critical evaluation, proper referencing, and adherence to established conventions.

Master these fundamentals to communicate research that makes a lasting impact.